

For the ET-8550 install the Film Direct 8550 ink or Graphics One Screenmate ink only. Do not mix any other ink in the tanks. Failure to do so will damage the head and void the warranty. Fill all the slots with black ink.



Follow the Epson instructions that come with the printer on how to load the ink, film and calibrate the head if necessary. Fill all the slots with black ink.

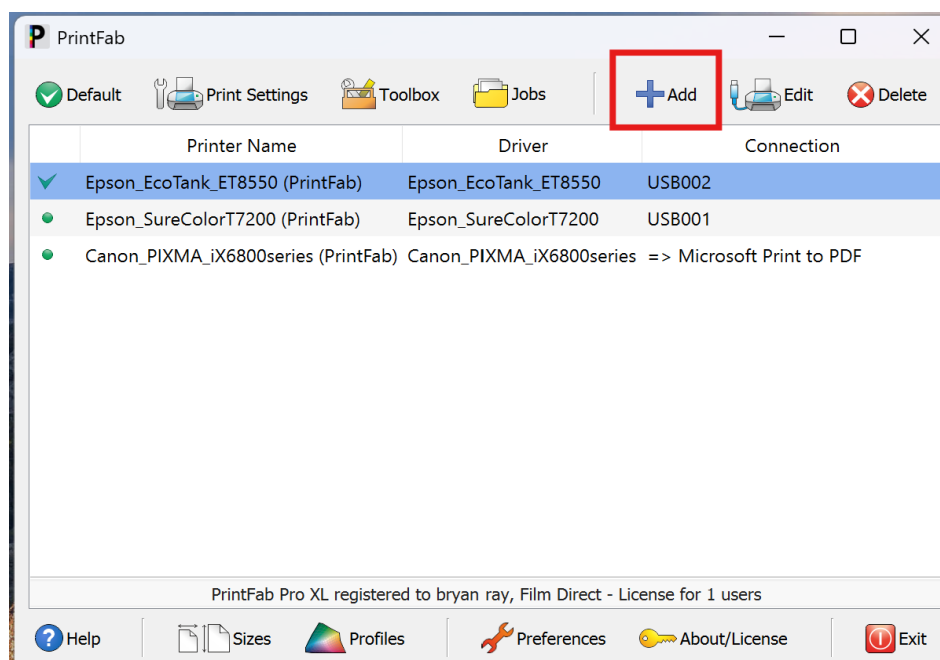
Connect the printer to the computer via a USB or ethernet cable only. (Not included). We do not recommend connecting the printer via WIFI.

Go to Epson.com and search for the latest drivers for your operating system. Even if the printer auto installs on your computer it's imperative to download and install the printer from the most current set of drivers.

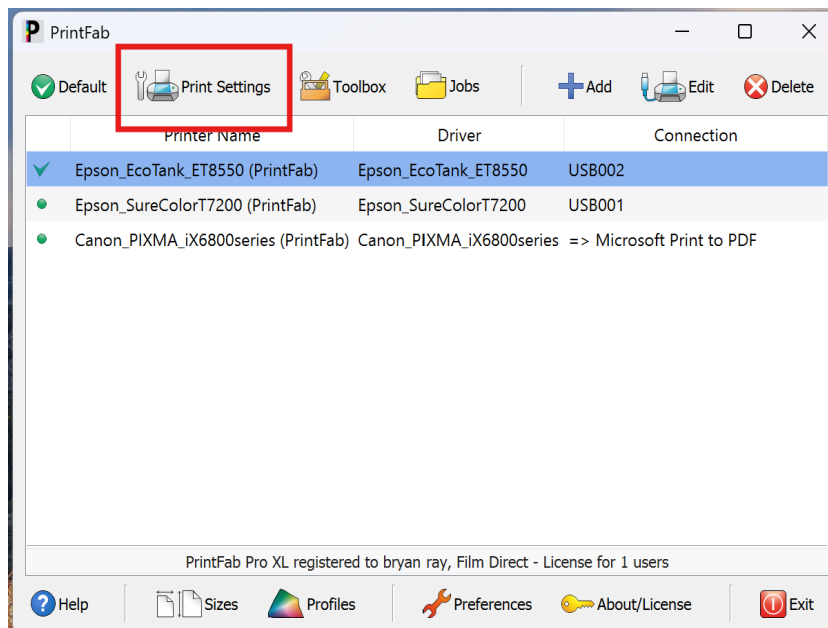
With the printer installed on the system run a test print to make sure the printer and computer are communicating.

Once confirmed that the printer is functioning properly download and install the PrintFab RIP software. We include instructions via email.

With Printfab installed, open PrintFab and click the +Add button. Follow the prompts and add the ET-8550 series printer.



Once the printer is installed in PrintFab, highlight the printer and click on “Print Settings” button.



Navigate to the Main Tab. It will look like the example below:

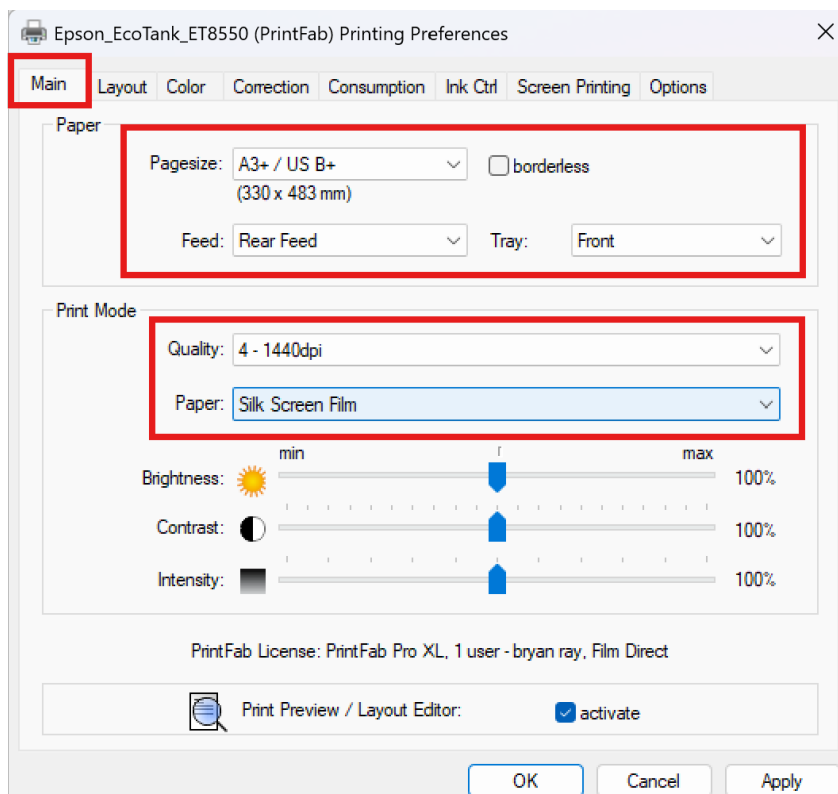
Page size: A3+ / US B+ (13x19)

Feed: Rear

Paper: Silk Screen Film

Quality: 1440 (or 720 for high speed)

Brightness and contrast 100%



Next click on the Screen Printing Tab. Setup the following:

Check "Activate Screen Printing Mode"

Ink Saturation will vary, start at 200% if the print is slow to dry or the small detail is closing up pull the saturation back in 10% increments. On the flip side if the print doesn't look dark enough or is slightly banding increase the saturation until you get the desired result.

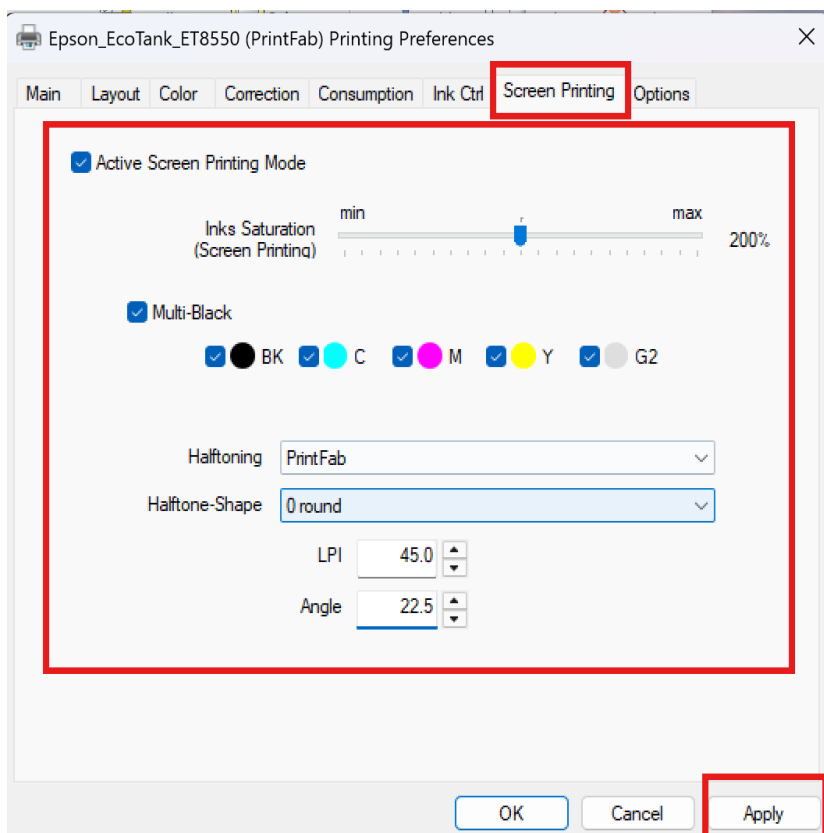
Check the Multi- Black box

Halftoning: PrintFab

Halftone -Shape: We recommend either 0 Round or 3 elliptical.

LPI: Divide whatever screen mesh you plan on using by 5. Example: If you are using a 230 mesh screen divide by 5 to give you 46. 46 is the highest lines per inch you can use on a 230 mesh screen. You can always use a lower LPI.

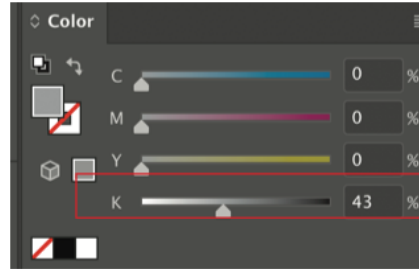
Angle: We recommend 22.5. Just avoid 45 and 90.



Click the Apply button. Close Printfab to save the settings. If your art program is open please restart to activate the PrintFab settings.

Printing through the RIP

When setting up the design in your art program you will want to use a swatch that is 100% black or a Pantone Spot color from your spot color pallet for solid prints. We highly recommended becoming familiar with how spot colors work in your particular art program. By adjusting the slider on your color swatch to less than 100% the print will automatically halftone on your film.



How the image looks on the computer screen



How the image looks on the film

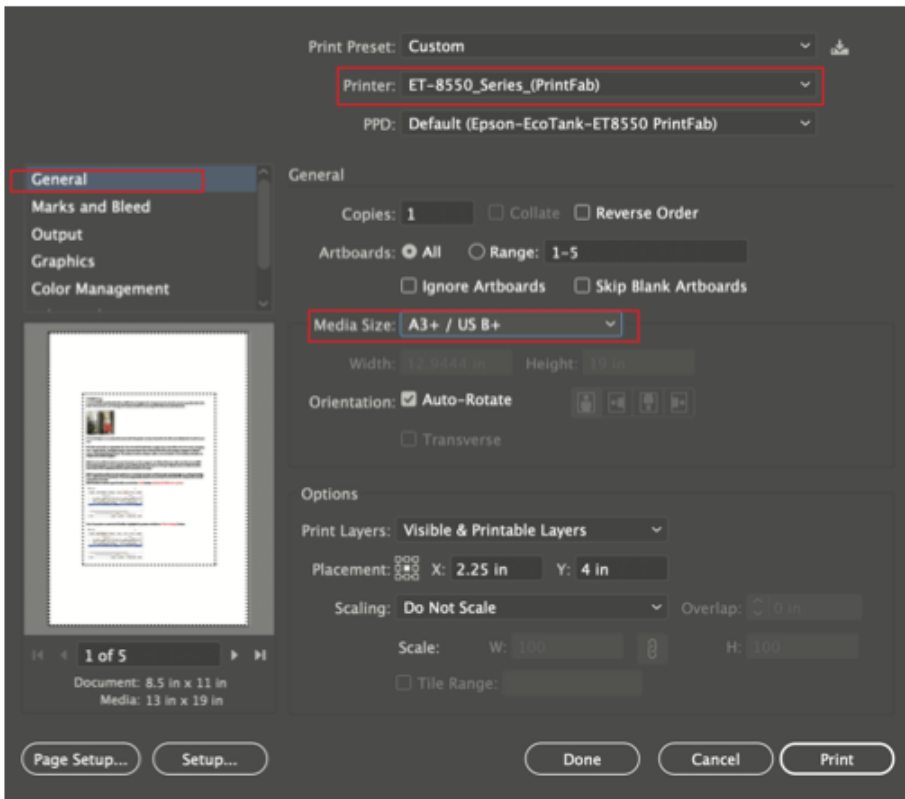


With the artwork complete and ready to print open your print dialog box. It should look something like this.

General Tab

For Printer choose the ET-8550 (PrintFab)

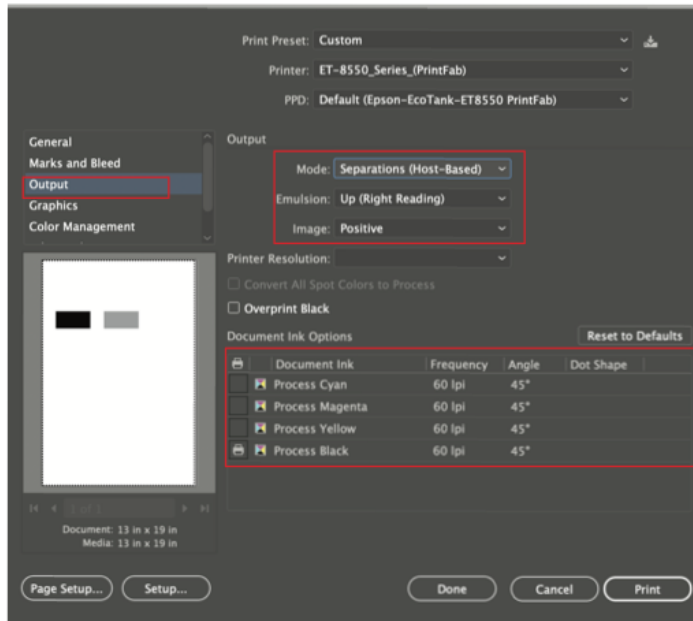
For Media Size choose the preset paper size that matches your document size. A3+ is



Next go to the Output Tab

For mode choose: Separations, UP Right Reading, Positive (unless you need a negative print).

Choose which colors you want to print. The printer icon next to the color designates which colors will print. PrintFab will automatically override the Frequency and angle settings shown here unless you change the Halftone Mode in PrintFab under the screen printing tab to Halftoning: App Specific. With this enabled you can use the frequency and angle settings from your art program.



Once you click print, PrintFab will bring up a document preview screen where you can preview each separations in your design before it prints to the printer. From there click print and the documents will start to print. The printer will automatically print all the colors you have chosen to print. This demonstration was shown in Adobe Illustrator. Other art programs will navigate differently but the overall settings should be the same.