

# Film Direct<sup>online</sup> .com

## INSTRUCTIONS FOR CANON PRINTERS

For tech support please call 1-800-683-5752 or visit our website for more details

Thank you for your recent purchase of our refillable ink kit for the Canon Pro-100, ix6820 or ip8720. To insure a smooth install we recommend removing the tape or orange/clear rubber plug that covers the vent hole.

### 1. Remove vent hole plug or tape

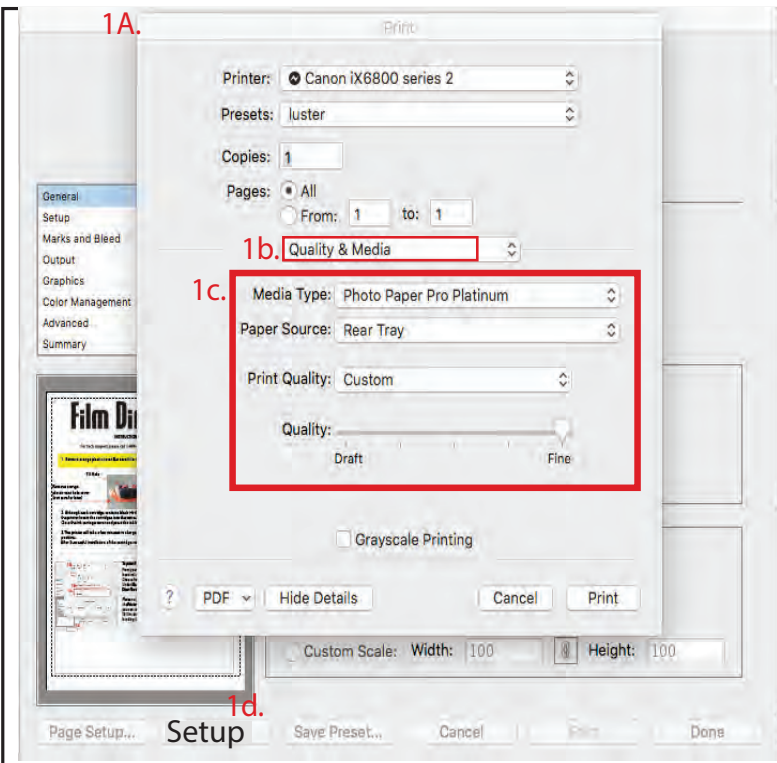


2. Remove the orange plastic cover from the bottom of the cartridge, do not discard, you will need to replace it to refill the cartridges. (Caution: You may get a few drips of ink when the orange plastic piece is first removed. Tap the cartridge on a paper towel to remove any excess ink. We suggest doing it over cardboard and wearing gloves).

3. Insert the cartridge into the appropriate color slot. Although each cartridge contains black ink they are marked for a specific color slot on the printer. Close the ink carriage cover and press the ink button to move the carriage into the home position. The printer will charge the ink.

4 At this point the printer is ready to print.

5. After the cartridge installation is complete you can print film with the following Canon driver settings or if you are running our PrintFab Rip software (recommended) please follow the instructions included with the RIP.



To print From Canon Drivers:

From your art program typically when you click print it will bring up a dialog box similar to exhibit 1a.

Choose from the drop down box choose the "Quality and Media " (1b) tab.

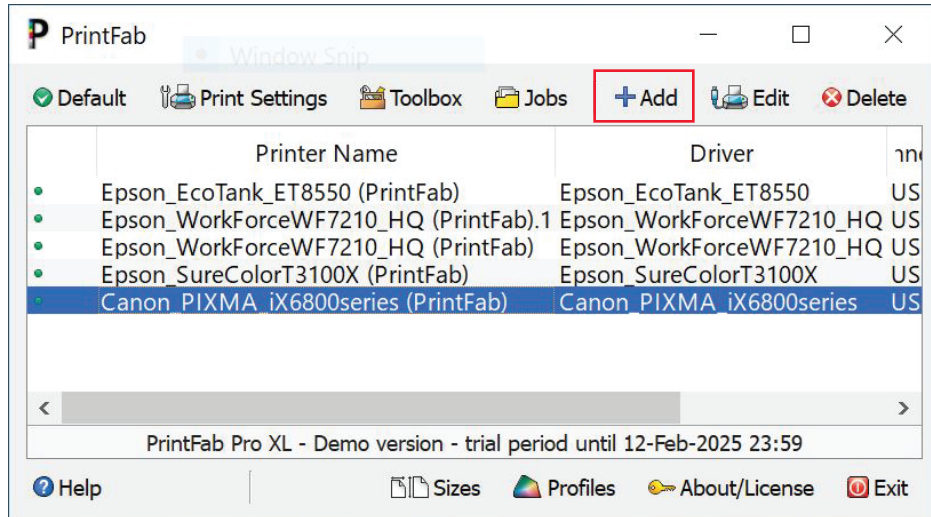
Under Media Type (1c) choose either Photo Paper Pro Platinum or Canon Pro Platinum

Print Quality: Custom

Quality: Fine

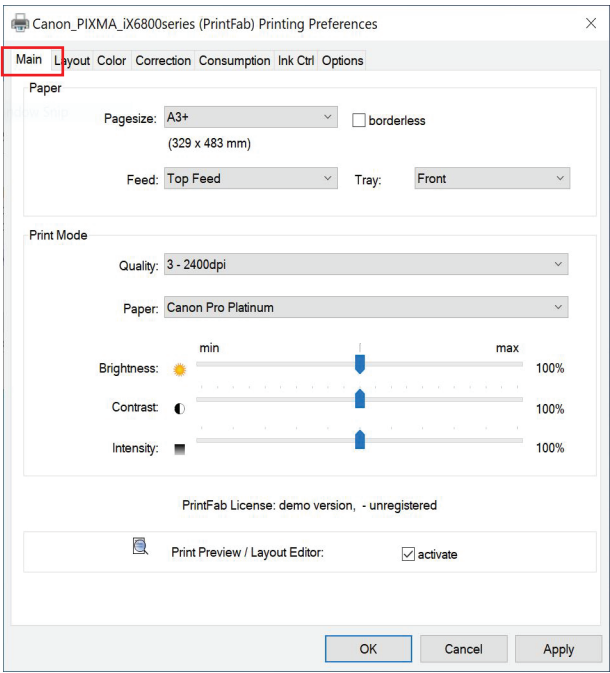
Please note some art programs such as Adobe Illustrator require you to click on the Setup (1d) button to make these changes. Once you make the changes you can save it as a preset for use in the future. As a general rule the film a 13x 19 film should take about 2-3 minutes to print. If it prints fast and shows some banding then the setting probably defaulted back to Plain Paper.

## PrintFab Setup (PC)

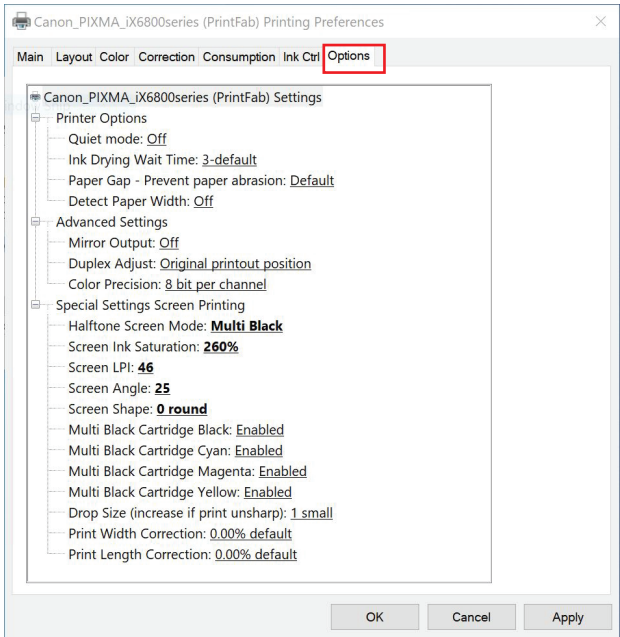


Download and install PrintFab on your computer. Once installed click on the **Add** button and choose your printer model.

With your printer installed highlight it and click on Print Settings. This will bring up a page that looks like this:



Navigate to the **Main Tab**. It will look like the example below:  
Page size: A3+/ US B+ (13x19)  
Feed: Top  
Paper: Canon Pro Platinum  
Quality: 2400  
Brightness and contrast 100%



Next click on the **Options Tab**. Setup the following:  
**Print Direction:**  
Unidirectional will produce sharper detail and cleaner lines. Bidirectional will be faster as the head prints in both directions. We typically recommend unidirectional printing.

**Halftone Screen Mode:**  
This is where you can change how many slots of black ink you will use under the Halftone Screen Mode. Multi Black uses all the cartridges. Single black just uses the primary black. When the Pre-Halftoned options are chosen your art program will override the Prinfab LPI, Angle and Dot Shape settings. This is if you want to use a LPI, angle or dot shape not on the printable drop down list. There is a way to enable or disable each cartridge if desired. One of these settings must be chosen or the printer will not print halftones. If the Muti Black feature is turned on you can enable or disable individual cartridges.

**Screen Ink Saturation -**  
The Screen Ink Saturation option is how you raise or lower the ink density. If you experience lines or banding in the film you can increase the percentage of ink. If the image looks over-saturated or you are loosing small details in the image you can lower the ink percentage.

**LPI Angle and Shape**  
The LPI Angle and Shape are user defined. We recommend dividing your screen mesh by 5 and use that number as your LPI. 46 LPI is most common for 225+ mesh screens. For most halftone work we suggest a Screen Angle of 25 and dot shape of round or ellipse.

Click Apply and close out of Printfab. To print from Printfab choose the Printfab driver from your printer options. It should look something like this **ix6800 (printfab)**.

## Ink Refill:

Please note our original FD dye black ink is NOT compatible with Canon printers. You must use our Canon formulation ink.

**Warning: Ink will stain anything it comes in contact with. We recommend refilling cartridges over a piece of cardboard and using gloves. Use Windex on a paper towel to clean up any spills.**

1. Remove the cartridges from the machine. Replace the orange plastic piece to the bottom of the cartridge.

2. You can pour the bulk ink from the bottle into our EZ refill jar to minimize spillage.

3. Remove the colored fill hole plug. Pull approximately six ml of ink into the syringe. Fill the reservoir of the cartridge. Let it sit for a few minutes to let the ink fill the sponge. Top off reservoir and replug the fill hole.

4. Put the cartridges back in the machine. Run a nozzle test print from the Canon software, if the test pattern is broke run a cleaning followed by a test print. Repeat if needed.

6. Canon ix6820 and IP8720 users: These cartridges have auto reset chips. If the light on the cartridge is flashing it means the ink level is getting low, but the ink level will not reset until you get the warning on the computer. When you get a warning on the computer that the cartridge is out of ink remove the cartridge, refill it and reinsert it. This should reset the ink level.

If you are using the Canon Pro-100 and you get a low ink warning on the computer hold the paper eject button for 10 seconds until the power light blinks once. You will need to do this for every cartridge that is low. Alternatively you use the chip resetter that is sold separately,

1. Chip Resetter Instructions:

2. Plug the cable into a USB receptacle or your computer.

3. Put the cartridge in the resetter as shown. Push down on the cartridge, the LED on the front of the cartridge will briefly flash. Continue to press down on the cartridge for 15 seconds. The light may or may not come back on.

4. Fill the ink cartridge and insert it back into the machine. The ink level should now read full.



1. Replace orange plastic piece to bottom of cartridge. Fill syringe.



2. Insert needle into fill hole. Dispense ink.



3. Let sit for approximately 5 minutes or until the ink level in the reservoir quits dropping. Top off reservoir. Replace fill plug. Insert cartridge back into machine



Pro-100 resetter instructions