

PrintFab setup for Mac with composer

Printer Setup: Follow the printers manufacturers instructions on ink install and printer setup. Go to your printers manufacturers website and download and install the current version of the print drivers. Run a test print to confirm your printer and computer are communicating. If you have trouble printing a test print do not move forward with PrintFab installation until you correct this. Film Direct will not support printer driver installation. You need to contact support from the manufacturer. Connect your printer via USB cable or LAN. Do not use WIFI.

1. Download the latest version of PrintFab from PrintFab.net.

Download PrintFab for macOS

Copyright note: PrintFab is copyright (c) ZEDOnet GmbH, Sedanstrasse 8, 87600 Kaufbeuren, Germany. All rights reserved.

You may not distribute the program files by any means, e.g. on WEB servers, CDs, etc. without the prior written consent of ZEDOnet GmbH. See the [PrintFab license in the online manual \(PDF\)](#) for details.

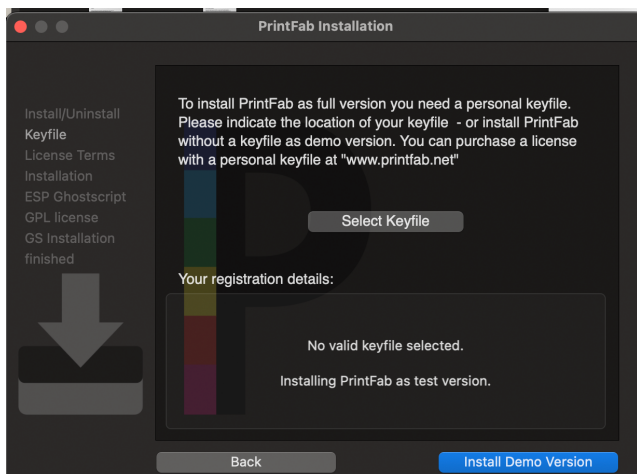
1. Download

PrintFab 3.00-beta9 Home / Pro / ProXL - for macOS 10.13 - 26.x (99 MB)

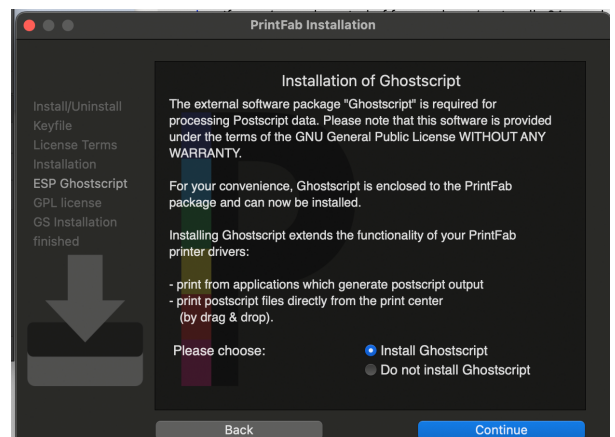
Beta version with **PrintFab Composer** application that loads & prints PDF, JPG, PNG and TIFF directly.



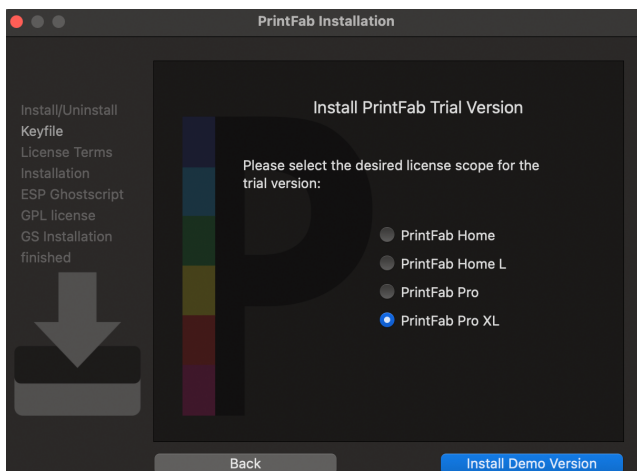
2. Download and install the trial version. You can select your key file at this point if you have already registered your software. If not continue with Demo Version . You can always add the key file later. The key file will be emailed from Zedonet (PrintFab). The key files acts as a proof of purchase which unlocks the trial version and should be kept secure . Film Direct does not have access to the key files.



4. Install Ghostscript. This is important.

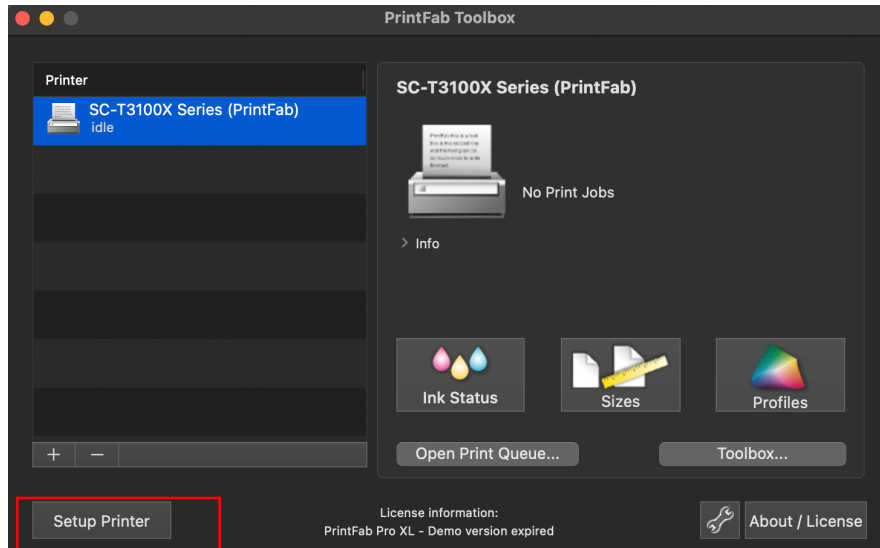


3. Choose the PrintFab Pro XL Version

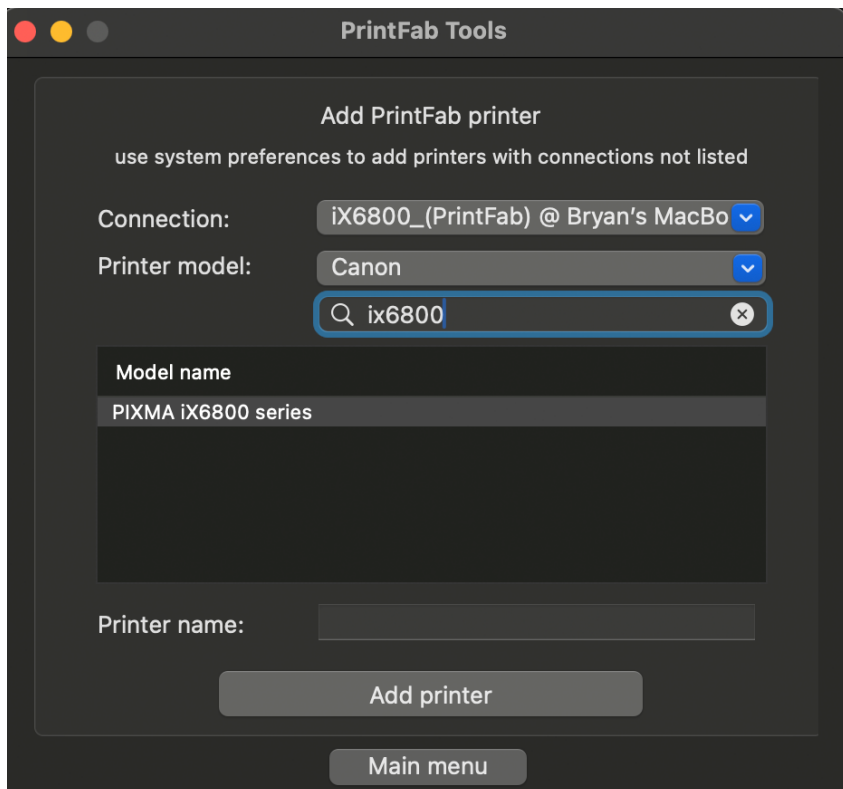


With PrintFab installed go to your applications folder and open the Printfab Toolbox

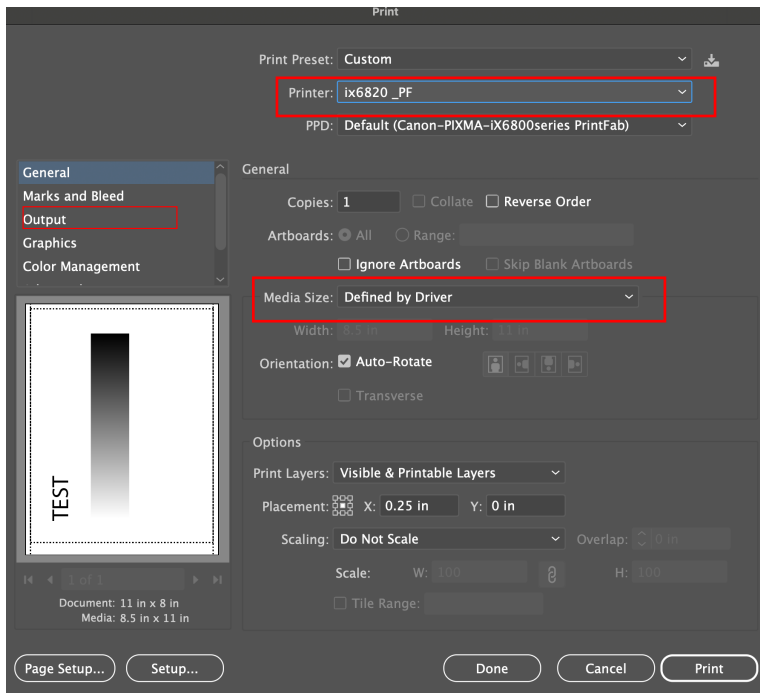
5. Choose "Setup Printer"



Choose **YOUR** printer model. Add printer.



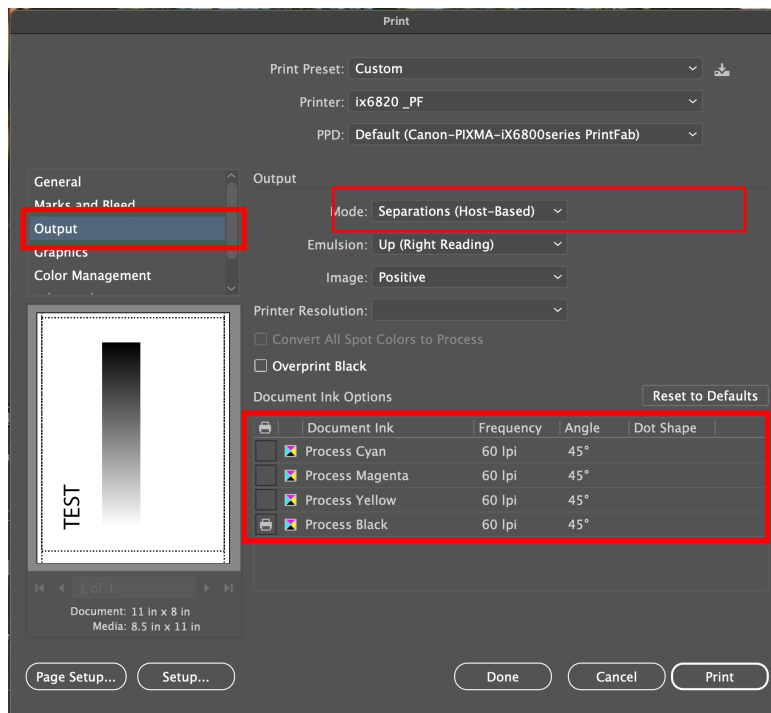
With the printer installed on the system setup a test print in Adobe Illustrator (Preferred) or your favorite art program.



Choose YOUR printer here

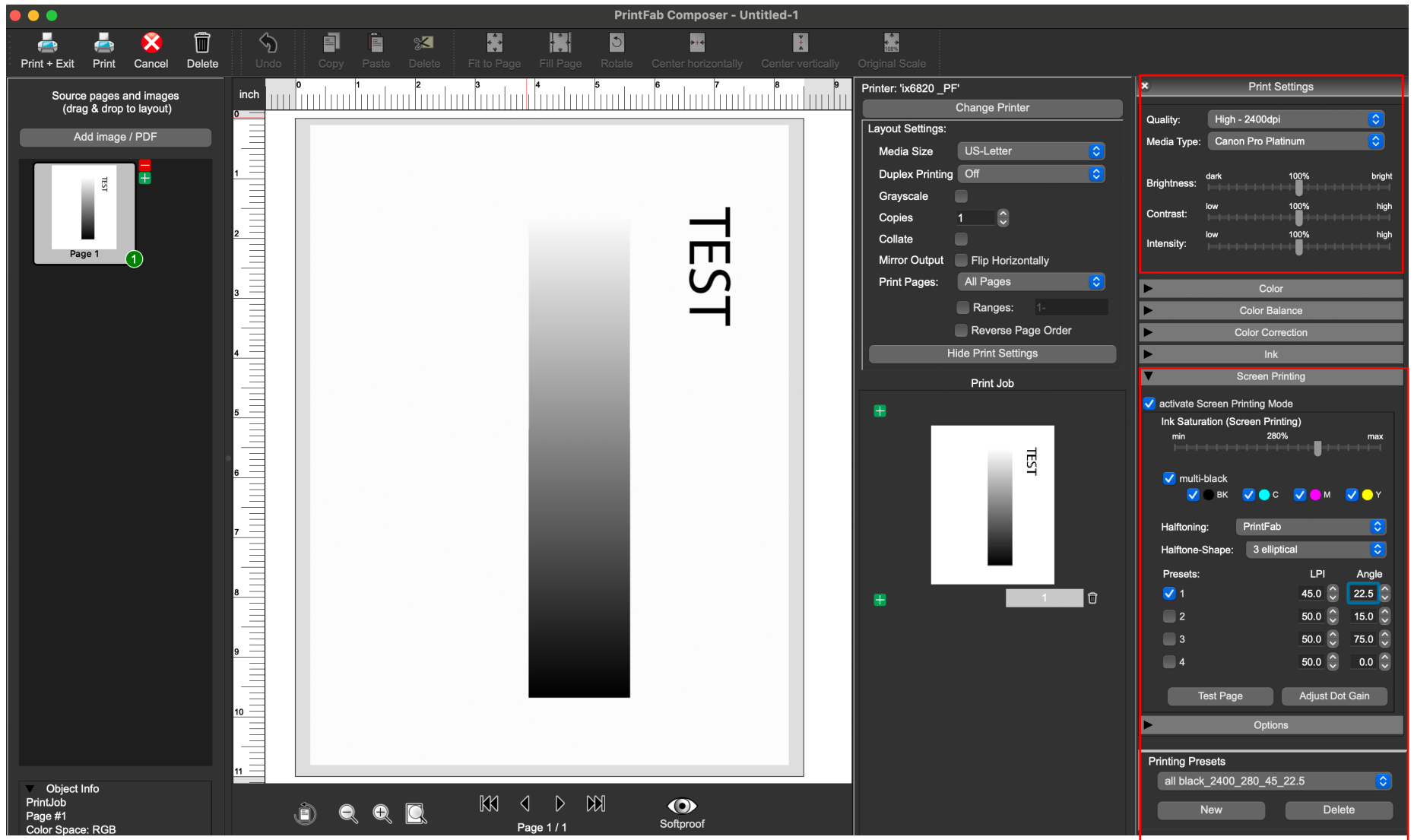
Choose your paper size here. A3+ is 13x19

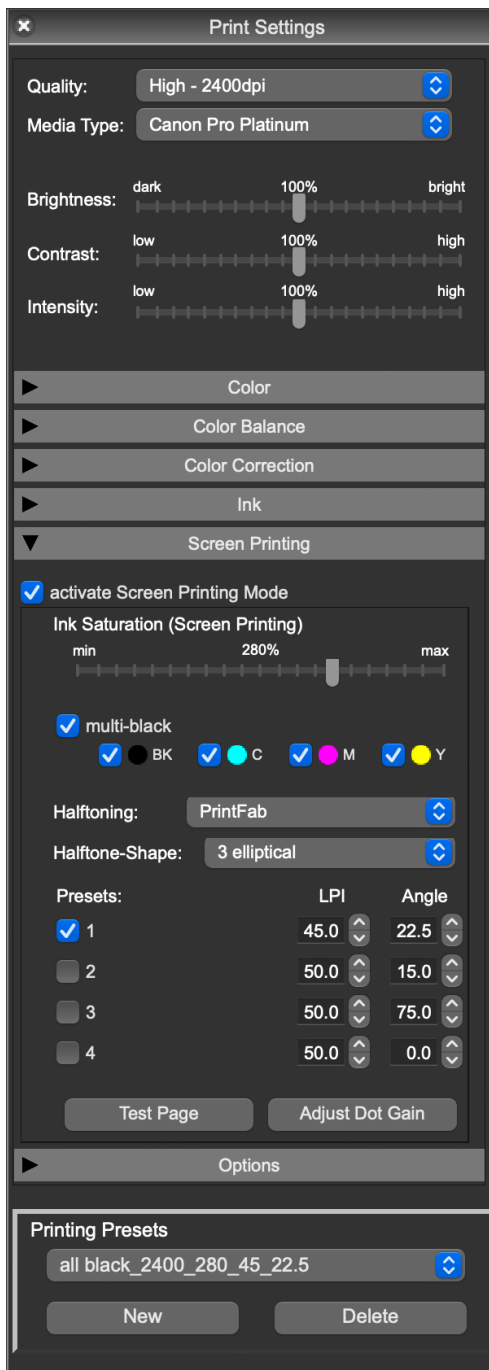
Click on Output and choose either your spot color or composite for images using a black swatch.



Click Print. This will bring up the PrintFab Composer where you will preview the separation and you can Choose your print settings.

Here is the new PrintFab Composer preview screen. You will notice a preview of your art in the center and print setting on the right. Most of the settings are not related to printing film so you can ignore everything but Print Settings and Screen Printing.





Print Setting Tab

Quality: This is the resolution setting. The higher the setting the finer the detail and cleaner the dots/lines. The trade off is the higher the resolution the slower the printer will print. We typically recommend resolution settings between 1200 and 2400 DPI.

Media Type: The default setting is Plain Paper. You can use pretty much use any setting besides plain paper. We recommend either a Matte, Transparency or Silk Screen Film media type.

Brightness: You can calibrate the brightness with the Adjust Dot Gain button under the Screen Printing Tab.

Contrast Leave this setting to the default of 100%

Intensity: Leave this setting to the default of 100%

Screen Printing Tab

Activate Screen Printing Mode: Keep this box checked. This activates all the options for screen printing.

Ink Saturation: This slider raises or lowers how much ink is being deposit on the film. The default is 200%. You can adjust this setting with the Test Page button.

Multi Black: Check this box and choose which and how many colors on the printer are filled with black ink.

Halftoning: Choose PrintFab to use the halftone settings on this screen.

Choose App Specific to use the halftone settings from your art program.

If you don't want to print halftones turn it off here.

Halftone Shape: User defined

Presets: This is where you setup the dot size (lpi) and Angle. We recommend dividing your mesh count by 5. This will give you the LPI. For example for a 200 mesh screen divide by 5 the smallest dot you should use would be 40 lpi. For the angle we recommend 22.5 degrees.

Test Page Button: This button will help you define how much ink is on the film. It will give you a number for the Ink Saturation Slider.

Adjust Dot Gain Button: This button adjusts the dot gain to make your halftone density more accurate. This feature will give you a number to use for the Brightness setting.

Printing Presets: Once you setup the previous settings you want to save them as a preset. You will need to choose a preset with every print. You can save as many presets as you need.

Printer Specific Settings:

Canon ix6820:

Quality: 2400

Media Type: Canon Pro Platinum

Activate Screen Print Mode: Yes, Choose the colors you loaded black ink into

Ink Saturation: It will probably be around 280% run a Test Page from the test page button to verify.

Multi Black: Check how many cartridges of black you are using.

Halftoning: We recommend 45 for most applications. Divide your screen mesh by 5 for a more accurate number.

Halftone Shape: Choose what you prefer round or ellipse are most common.

Save the preset for future use

Epson ET-8550:

Quality: 1440

Media Type: Silk Screen Film

Activate Screen Print Mode: Yes, Choose the colors you loaded black ink into

Ink Saturation: It will probably be around 160% run a Test Page from the test page button to verify.

Multi Black: Check how many cartridges of black you are using.

Halftoning: We recommend 45 for most applications. Divide your screen mesh by 5 for a more accurate number.

Halftone Shape: Choose what you prefer round or ellipse are most common.

Save the preset for future use

Epson t3170x:

Quality: 1200

Media Type:Matte Film

Activate Screen Print Mode: Yes, Choose the colors you loaded black ink into

Ink Saturation: It will probably be around 160% run a Test Page from the test page button to verify.

Multi Black: Check how many cartridges of black you are using.

Halftoning: We recommend 45 for most applications. Divide your screen mesh by 5 for a more accurate number.

Halftone Shape: Choose what you prefer round or ellipse are most common.

Save the preset for future use