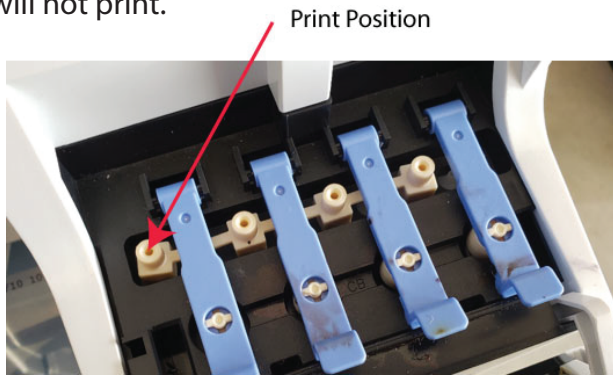


T3170x Setup

Epson ships printers in transit mode. To take it out of transit mode, open the cover to install the inks and move the tan rubber piece into the following position. If the tan piece is not in this position the ink will not load and the printer will not print.



For the t3170x install the Graphics One Screenmate ink only. Do not mix any other ink in the tanks. Failure to do so will damage the head and void the warranty.

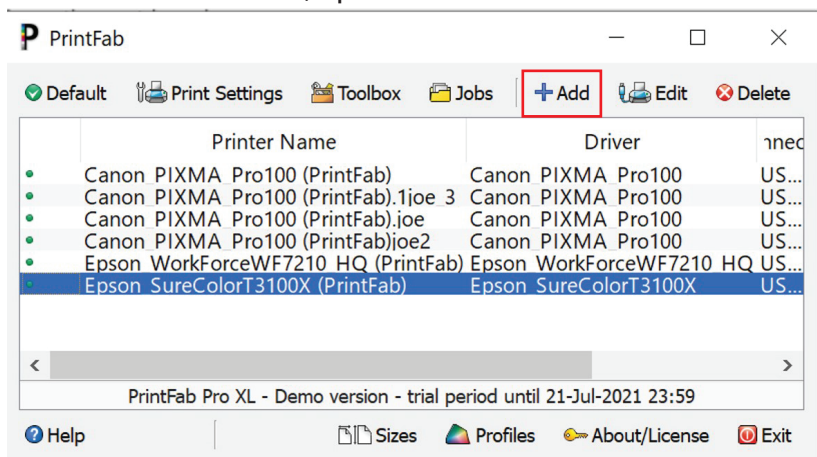


For hardware setup follow the Epson Quick Start Guide that comes in the box on how to setup the printer. Use the Film Direct t3170x inks instead of the Epson ink in all 4 tanks. The ink install should take roughly 15 minutes. When the ink is done charging load a roll of film per the Epson instructions. To make sure that the ink and film are properly installed run a nozzle check. From the LCD on the printer navigate to Maintenance > Print Head Nozzle Check. This will print a small sheet of film with a series of dashes.

With the ink and film loaded connect the printer to the computer via USB or Ethernet cable only. Do not use WIFI. Follow the prompts on your computer to install the printer. You may need to go to Epson.com and download the latest driver if the computer fails to install the printer on its own.

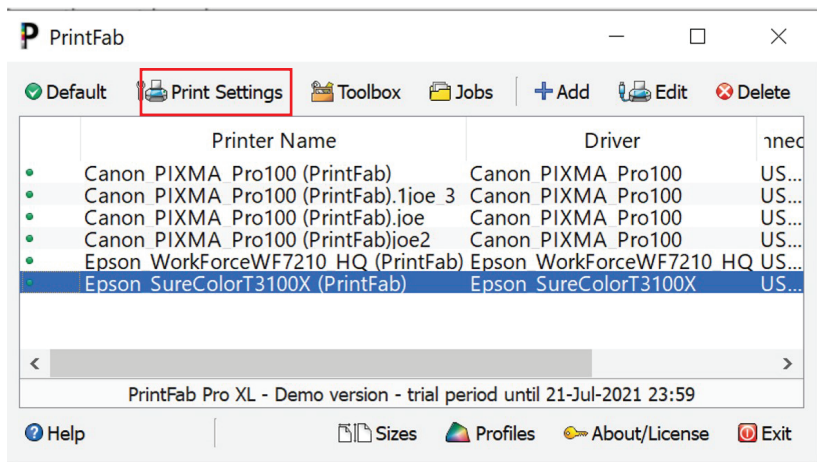
We recommend downloading the full owners manual from the Epson website and becoming familiar with the full features of the printer.

With Printfab installed, open PrintFab and click the +Add button

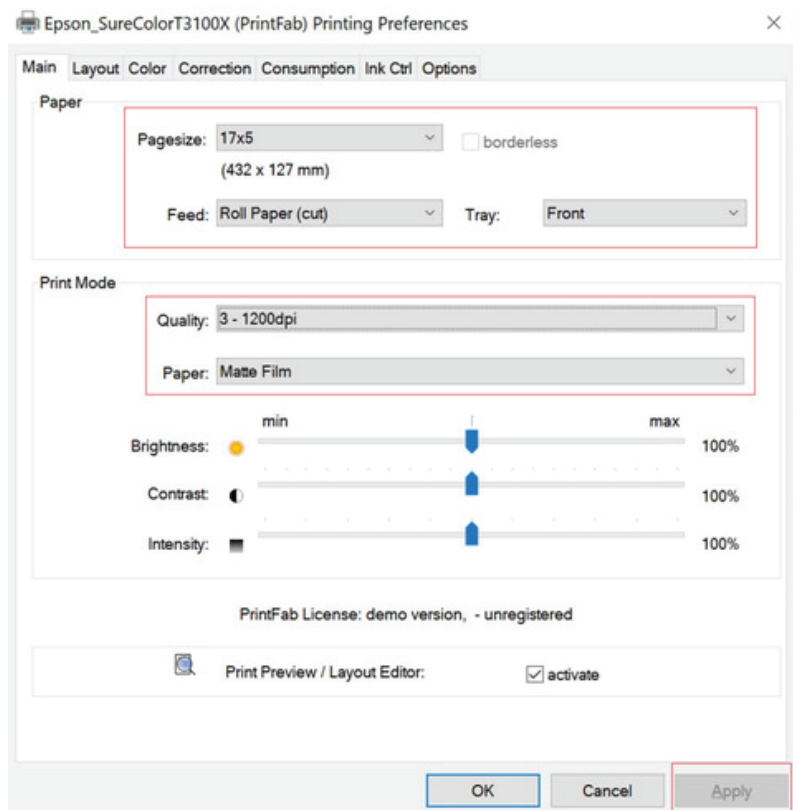


Add the T3100x series printer.

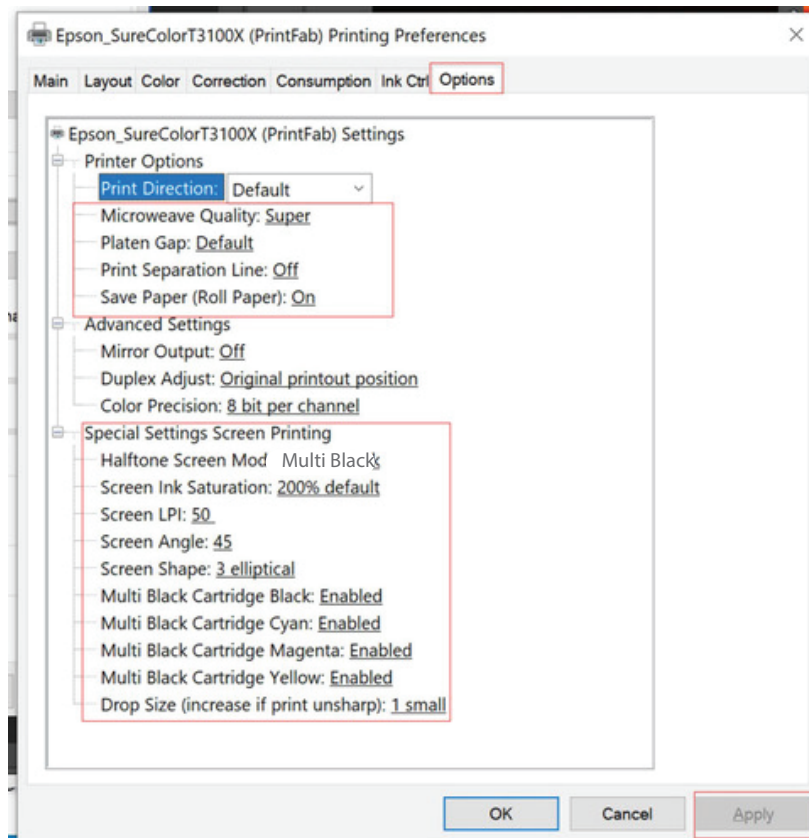
Once the printer is installed in PrintFab, highlight the printer and click on "Print Settings" button.



Under the Main tab use the following settings. Leave the Page size default for now.



These are common settings for the t3170x. If your system is using all black ink change the Halftone Screen Mode to Multi Black and Screen Ink Saturation to 160%. Click Apply when done.



Next click on the Options Tab. Setup the following:

Print Direction:

Unidirectional will produce sharper detail and cleaner lines. Bidirectional will be faster as the head prints in both directions. We typically recommend unidirectional printing.

Halftone Screen Mode:

This is where you can change how many slots of black ink you will use under the Halftone Screen Mode. Multi Black uses all the cartridges. Single black just uses the primary black. When the Pre-Halftoned options are chosen your art program will override the Prinfab LPI, Angle and Dot Shape settings. This is if you want to use a LPI, angle or dot shape not on the printable drop down list. There is a way to enable or disable each cartridge if desired. One of these settings must be chosen or the printer will not print halftones. If the Muti Black feature is turned on you can enable or disable individual cartridges.

Screen Ink Saturation -

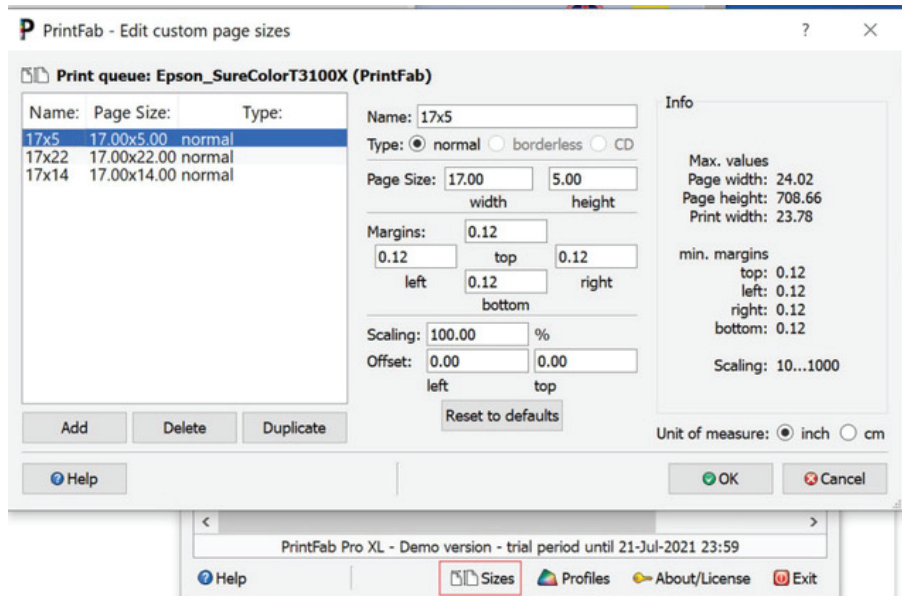
The Screen Ink Saturation option is how you raise or lower the ink density. If you experience lines or banding in the film you can increase the percentage of ink. If the image looks over-saturated or you are loosing small details in the image you can lower the ink percentage.

LPI Angle and Shape

The LPI Angle and Shape are user defined. We recommend dividing your screen mesh by 5 and use that number as your LPI. 46 LPI is most common for 225+ mesh screens. For most halftone work we suggest a Screen Angle of 25 and dot shape of round or ellipse.

Setting up custom Page sizes:

Go back to the main page of PrintFab and click the “Sizes” button. For the roll printer option you will need to create custom page sizes that correspond to your art programs document sizes. You can setup as many custom page sizes as needed. These custom pages will show up in your art program as different paper size options. We suggest such size variations as 17x5 for pocket prints and 17x11, 17x13, 17x15 and 17x22 for larger prints. You can add as many sizes to suite your need. When finished close out of PrintFab and you may need to restart your art program for these options to become available

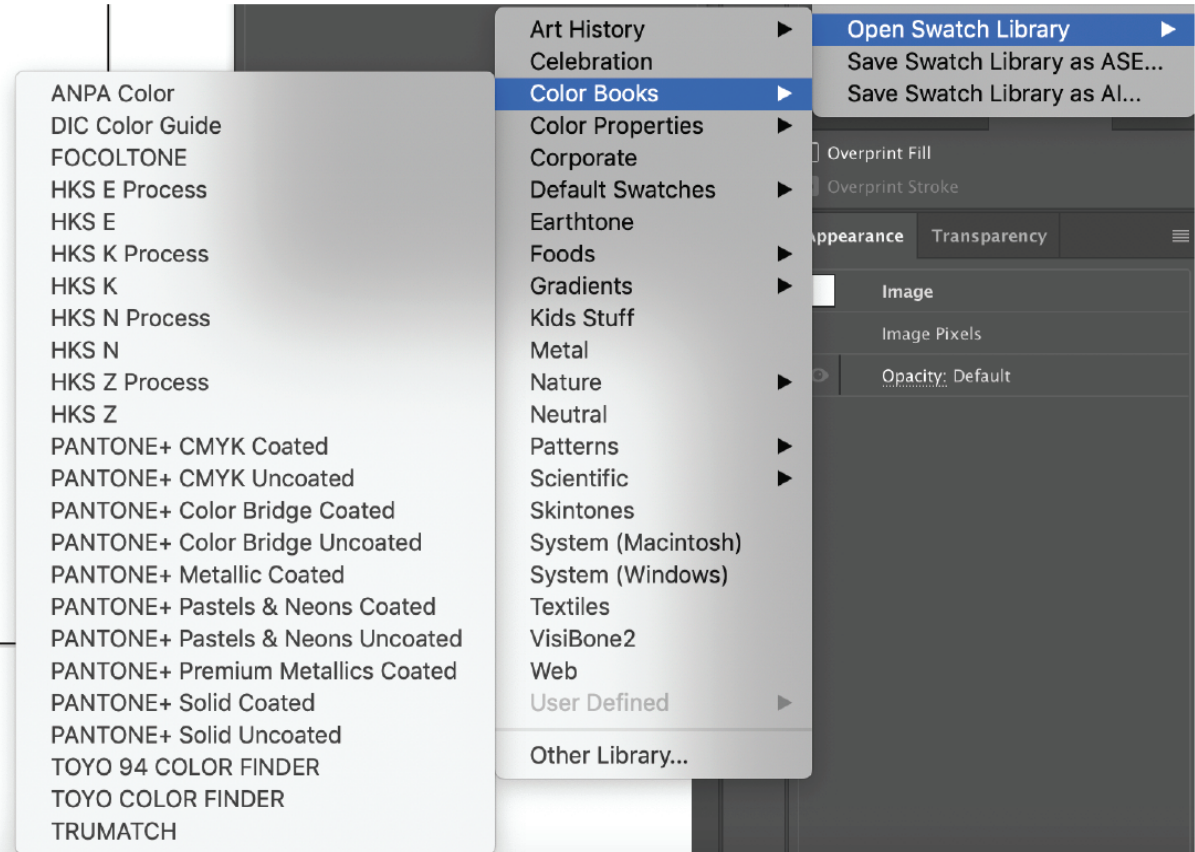


Printing through the RIP

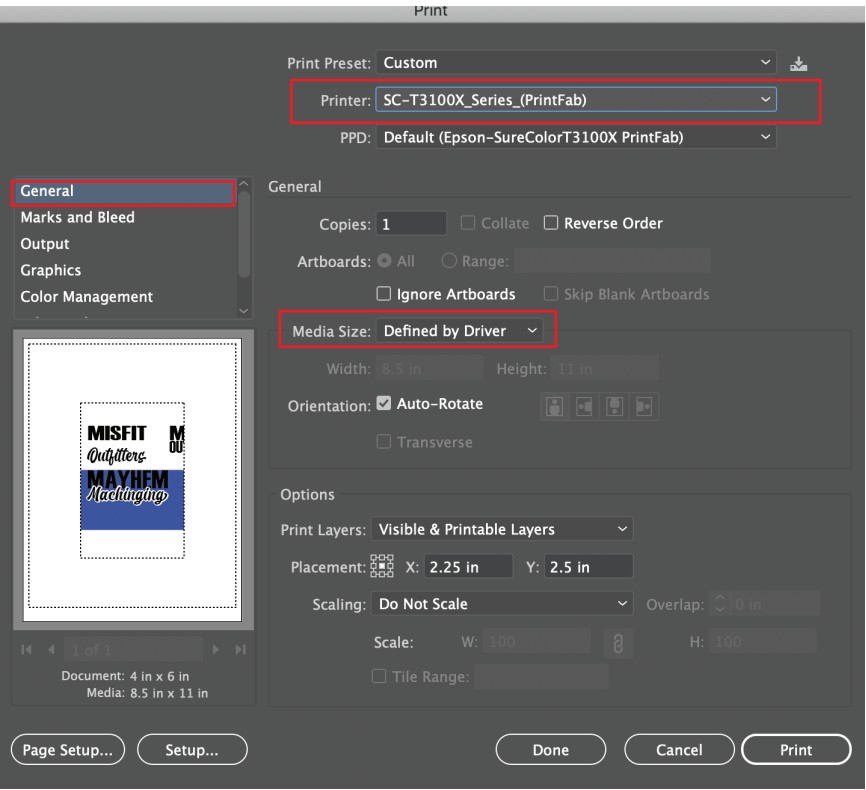
When setting up the design in your art program you will want to use a swatch that is 100% black or a Pantone Spot color from your spot color pallet for solid prints. We highly recommended becoming familiar with how spot colors work in your particular art program. By adjusting the slider on your color swatch to less than 100% the print will automatically halftone on your film.



Opening the Pantone spot colors in Adobe Illustrator from your swatch pallet. Design your art with swatches from any of the spot color books and each spot color will be available for output.



With the artwork complete and ready to print open your print dialog box. It should look something like this.

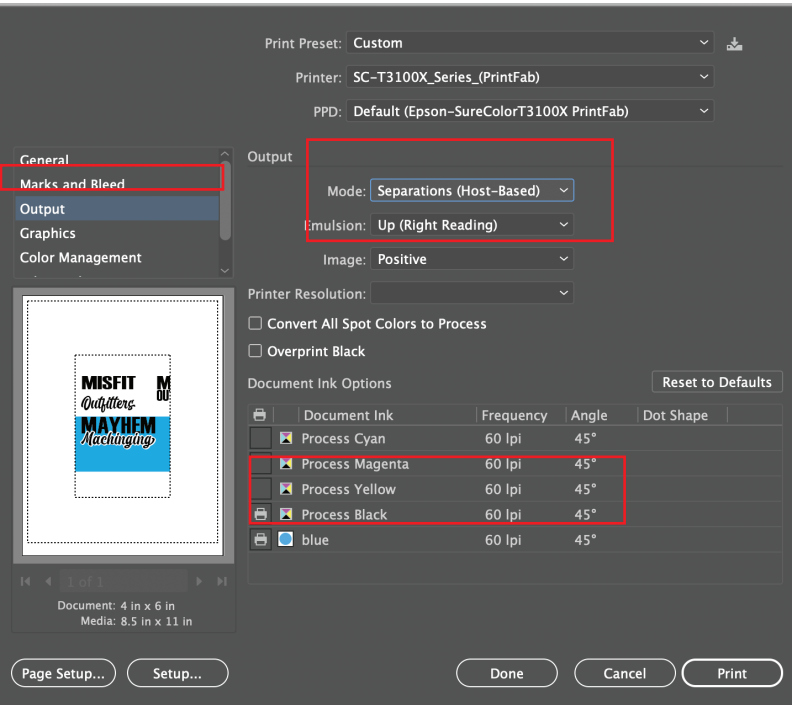


General Tab

For Printer choose the SC-t3100x (PrintFab)
For Media Size choose the preset paper size that matches your document size.

Next go to the Output Tab

For mode choose: Separations, UP Right Reading, Positive (unless you need a negative print).
Choose which colors you want to print. The printer icon next to the color designates which colors will print. PrintFab will automatically override the Frequency and angle settings shown here unless you change the “Halftone Screen Mode” in PrintFab under the options tab to “Multi-Black Prehalftoned”. With this enabled you can use the frequency and angle settings from your art program.



Once you click print, PrintFab will bring up a document preview screen where you can preview each separations in your design before it prints to the printer. From there click print and the documents will start to print. The printer will automatically print all the colors you have chosen to print cutting each sheet of film between prints.